

# SAFETY FORUM

## BCSD

Berea City School District

**EXCELLENCE • INTEGRITY • PURPOSE**

Serving Berea, Brook Park and Middleburg Heights



# Agenda

---

- Review safety and security plans
- **ALICE/CRASE** Review
- Future training / drills for staff and students

## What's in place now?

---

- Emergency Management Plan:
  - NOT public record and cannot be shared
  - Reviewed by the Department of Homeland Security and Ohio Department of Education
  - Reviewed prior to the start of each year
- Monthly District Safety Committee meetings
  - Building safety committees
- On file with local safety forces

# Preparedness Drills

---

## 12 drills per year

- ✓ Fire Drills (6)
- ✓ Emergency Response (3)
- ✓ Tornado (3)

# Building Safety

---



Security Cameras



Exterior locking doors with cameras and remote access control



SRO / police patrols



Police/fire train active threat and Rescue Task Force concepts in our buildings

## Building Safety

---



Radio system in use for select personnel



Buildings mapped and kept on file with safety services



Staff receive training from safety services

## 3 common methods when dealing with potential crisis

---



# Stay Put

---



- Initial response to crisis event
- Used in situations such as medical emergency or minor utility situation
- Hallways are cleared
- Teaching and learning continues



# Shelter in Place / Reverse Evacuation

---



- Response to external threat or condition
  - Weather
  - Crime in community near school
- Reverse evacuation: everyone brought inside
- Doors remain locked/windows covered
- Classes continue with minor interruption
- Parents notified

# Lockdown

---



- When evacuation is not an option
- Lock doors
- Out of sight
- Lights off
- Prepare to evacuate or counter direct aggression



Alert  
Lockdown  
Inform  
Counter  
Evacuate

Common Sense, just not Common Knowledge

ALICE is **NOT** a linear, progressive response

## Truths about active shooter events

---

- Shooter chooses the target area for high publicity and high population of static targets (e.g., schools, malls, churches, etc.)
- If somebody wants into a building, they will get in.



Entrance into  
Sandy Hook  
Elementary



# Truths about active shooter events

---

- Shooter goal is next “high score”
- Most active shooters are not a skilled gunman
- Passive and static targets become easy victims
- Once shooter initiates killing, pleading and negotiating will be useless

*“In any moment of decision, the best thing you can do is the right thing, the next best thing is the wrong thing, and the worst thing you can do is nothing.”*

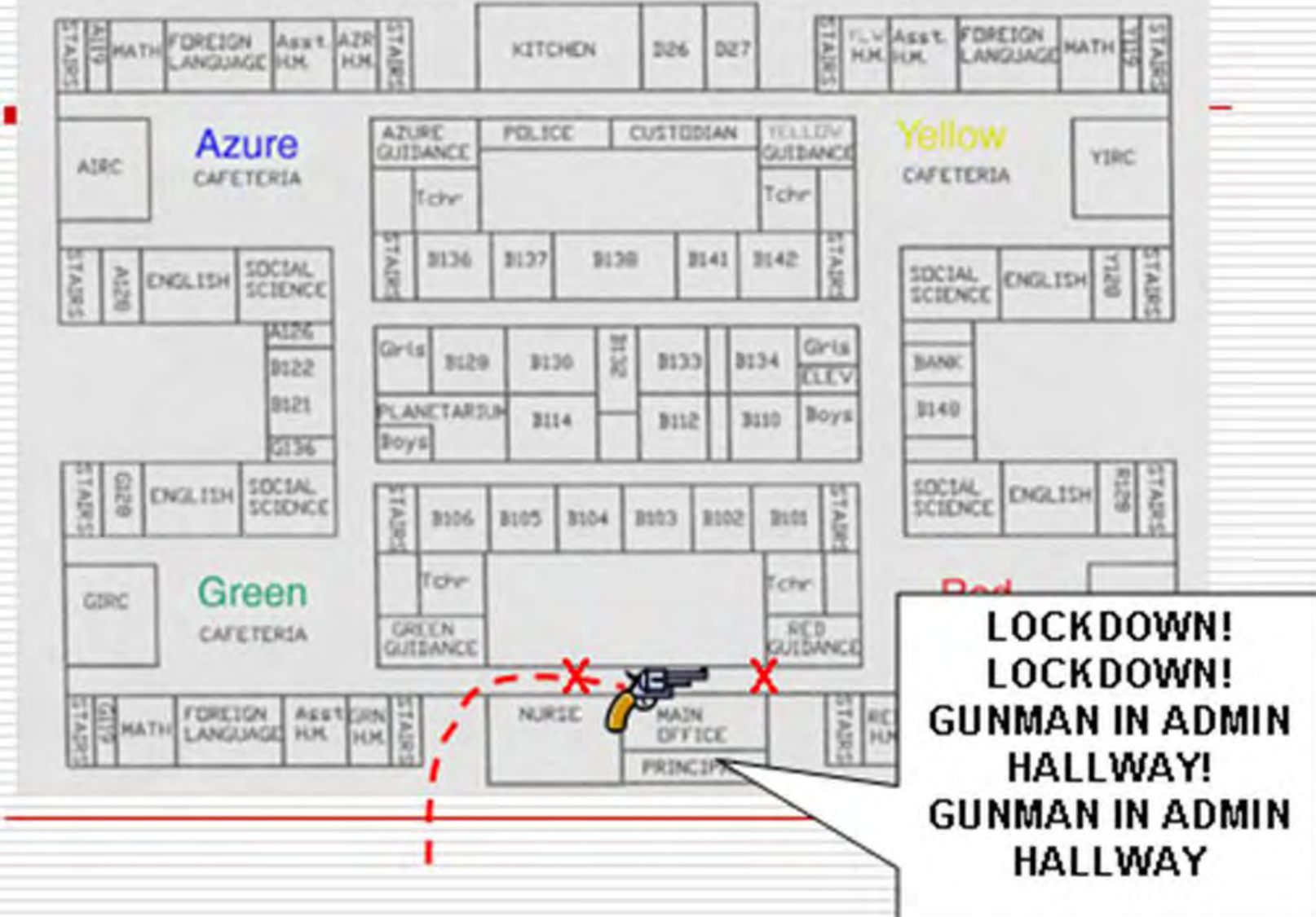
- Theodore Roosevelt



## **ALERT = Initial Awareness**

- Put out all known information to as many as possible via as many means as possible
- No reason to hold anything
- Do not use codes
- Be repetitive
- Who can make the announcement?

# Any School, USA







## LOCKDOWN

- If evacuation does not appear safe, secure-in-place
- Does not just mean lock a door
- Learn barricading techniques
- Learn area denial techniques

# BARRICADE

The idea is to create a stronghold that nobody can breach...*BE A HARD TARGET!*

- Doors should open out per fire code
- Straps, belt, purses will hold your door closed
- Barricade using anything and everything
- How are your rooms arranged?
- Bookshelves, table, other objects near door

# BARRICADE





# INFORM

- A continuation of ALERT
- Provide real-time information – HOW?
- Allows for good decision-making
- Confuse and frustrate attacker – HOW?



- Talk to/at THEM
- Redirect focus and anger...at what?
- Take advantage of the attacker's fragile psychological state
- They are suicidal, perhaps we can make it happen!  
What historically has been the trigger?



# COUNTER

- Teach skills that interrupt the physical and mental act of shooting accurately

*Different and much more difficult than just shooting*

Recognize • Assess • Respond

- Teach skills that will allow the targets to benefit from unknown tactical advantages

Distance

Time

Movement

Numbers

# Is this an acceptable counter measure?





## EVACUATE

- Provide occupants with the ability and authority to evacuate
- Removes as many potential targets as possible
- Removes need for many of those concerned to come to the scene
- Follow natural response
- Threshold assessments





- Whether planned or not, a mass evacuation will occur during an Active Shooter event
- Where will they go?
- Rally/Reunification points
- **NO VEHICLES**



- Threshold assessments
  - Check hall before entering
  - Send groups (large or small) based on the circumstances
- Are you near a doorway, stairwell, exit door?
  - How long is the hallway before a stairwell or exit?
  - Will students/staff bottleneck at choke points?
- Ease of exit
  - Non-traditional exits...can you make a door, can you exit through a window?

## Where do we go?

---

- Rally points vs. reunification points
- Rally point – where students and staff will meet after evacuating building
- Reunification point – where parents are sent to be reunified with their children

## What should parents do?

---

- Please follow the instructions provided by the District and local safety services
- DO NOT respond directly to the scene. It will be chaotic and you may block or interfere with medical or other safety services accessing the site
- Respond to the designated reunification point

# When Police Arrive

---

- Follow commands
- Show your palms
- Do not move



# Priority of Work

---

- Stop the killing
- Stop the dying
- Evacuate the area



# Medical

- EMS delay
- People need help
- Seek immediate responder training
- **STOP THE BLEED**



# Rescue Task Force

---

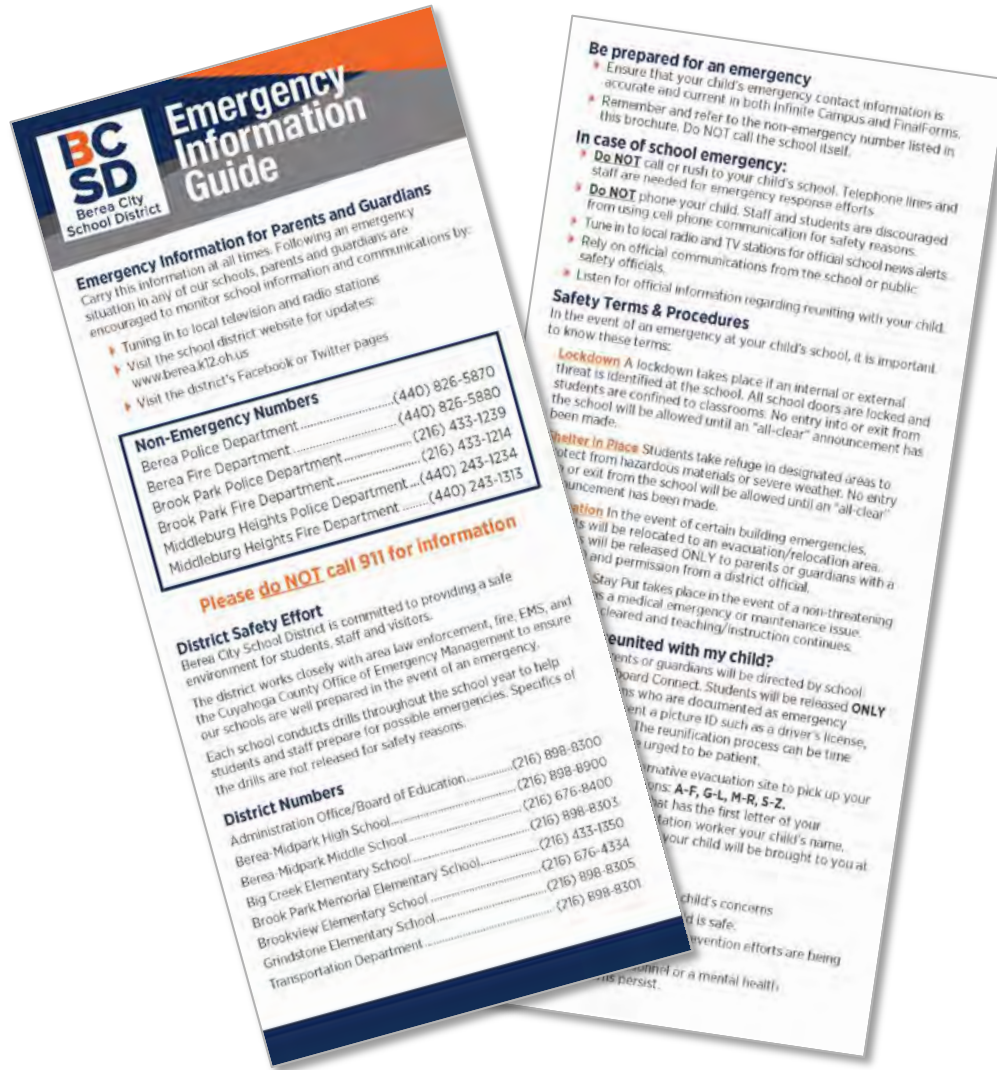




## Future Training Drills

---

- Age appropriate instruction provided by staff with assistance from safety services
- Classroom discussions
- Building wide emergency preparedness drills practicing enhanced lockdown, counter, and evacuate



# Emergency Information Guide